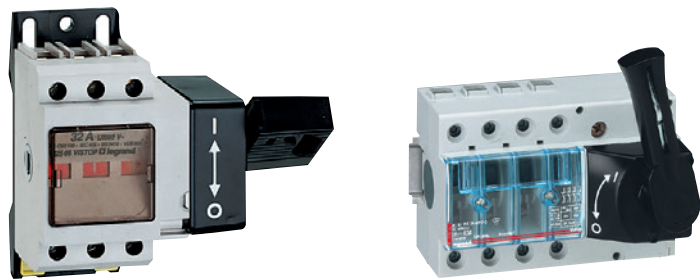


Vistop™ isolating switches

32 to 160 A



0 225 05

0 225 15

Safety switches for on-load circuit breaking by visible isolation of the contacts
 Double break type load switching with self cleaning contacts by rapid make and break movements
 Fixing on rail EN 60715 or screw fixing (only on rail for Vistop 63 A)
 Padlockable handle in open position: 1 to 3 padlocks Cat.No 0 227 97 (p. 65)
 2 versions for mounting on faceplate:
 • right side handle, supplied with seal to maintain the IP protection for the enclosures (up to IP 55), screws, self adhesive drilling template, extension rod (30 to 170 mm) for creating an external angle
 • direct front handle or external (for Vistop 63 to 160 A)

Pack	Cat.Nos		32 A	Connection	No of 17.5 mm modules
1	Front handle	Side handle	2P	16 mm ² cage terminals	4 + 3.5
1	0 224 98	0 225 03	3P		4 + 3.5
1	0 225 00	0 225 05	4P		5 + 4.5

		63 to 160 A			
				Possibility to add auxiliary contact Cat.No 0 227 07	
		63 A			
1	Front handle	Side handle	3P	cage terminals	7
1	0 225 12	0 225 16	4P		
1	0 225 20	0 225 25	3P	key	7.5
1	0 225 22	0 225 27	4P	6 sides	9
1	0 225 34	0 225 44	3P	key	7.5
1	0 225 39	0 225 46	4P	6 sides	9
1	0 225 51	0 225 54	3P	key	7.5
1	0 225 53	0 225 56	4P	6 sides	9

Accessories

1	0 227 32	Front external handle for Vistop 63 to 160 A Comprising: connection rod, bracket, self-adhesive drilling template, fixing accessories (including a seal to maintain the IP protection of enclosure up to IP 55) and locking mechanism to prevent opening of the door when the circuit is closed Door distance 35 to 470 mm
---	----------	---

1	0 227 04	Auxiliary signalling contacts IP 2X - 5 A - 250 V To be fitted inside Vistop isolating switches Main contact NO + NC	Connection (mm ²) lug 2.58
1	0 227 07	Additional contact NO + NC To be fitted on main contact Cat.No 0 227 04 in order to obtain 2 NO + 2 NC	lug 2.58

For detailed dimensions, see e-catalogue



Vistop™ isolating switches

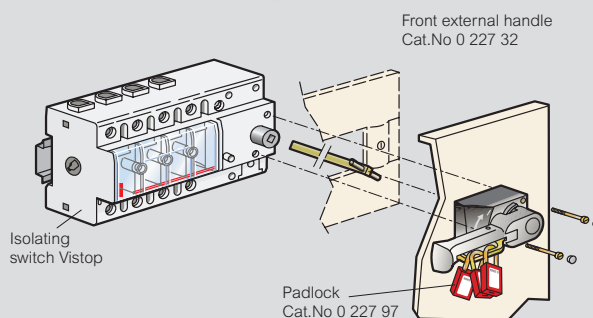
32 to 160 A

Conform to standards EN / IEC 60947-3, BS EN 60947-3, VDE 0660, NBN EN 60947-3, CNOMO E03 - 15-611 R, Veritas approved
 Glass fibre reinforced insulating casing, self-extinguishing at 960 °C (IEC EN 60695-2-1)
 Handle can be padlocked in open position using 1 to 3 padlocks Ø6 mm

Electrical characteristics

Thermal rating (Ith)		32 A	63 A	100 A	125 A	160 A
Terminals		cage	cage	cage	cage	cage
Connection	Cu (flexible)	4 to 35 ²		4 to 35 ²		
	Cu (rigid)	4 to 50 ²		4 to 70 ²		
Insulating voltage (Ui)		690 V~	690 V~	690 V~	690 V~	800 V~
Impulse resistant voltage (Uimp)		8 kV	8 kV	8 kV	8 kV	8 kV
AC 22 A ⁽¹⁾	400 V	32 A (17 kW)	63 A (35 kW)	100 A (55 kW)	125 A (70 kW)	160 A (88 kW)
	500 V	32 A (20 kW) ⁽²⁾ 20 A (14 kW)	63 A (44 kW)	100 A (69 kW)	125 A (87 kW)	160 A (110 kW)
AC 23 A ⁽¹⁾	690 V	-	40 A (38 kW)	100 A (96 kW)	125 A (120 kW)	125 A (120 kW)
DC 22 A/250 V ⁽¹⁾⁽³⁾		*	100	125	125	
DC 23 A/250 V ⁽¹⁾⁽³⁾		*	100	125	125	
Breaking capacity (Icu) (kA peak)		5	15	15	15	15
1 s resistant current (Ics) (kA rms) (Icw)		0.5	2.5	3.5	3.5	3.5
Icc with fuses (kA rating)		100	100	100	100	80
Fuse rupture capacity		32 A (gG) 20 A (aM)	63 A	100 A (gG) 63 A (aM) ⁽⁴⁾	125 A (gG) 125 A (aM) ⁽⁴⁾	160 A (gG) 125 A (aM)
Short circuit capacity (kA prospective peak) (Icm)		0.75	7	12	12	12
Mechanical endurance (No of operations)		> 10000	> 30000	> 30000	> 30000	> 30000
Index of protection		IP 2X (16 mm ² IP 3X under front plate)	IP 2X B (IP 3X C under front plates) from 6 mm ²	IP 2X B (IP 3X C under front plate) from 10 mm ²		

Example of mounting with Vistop 100 to 160 A



1: Test according to IEC 60947-3
 AC 22 A / DC 22 A: resistive motor breaking
 AC 23 A / DC 23 A: inductive motor breaking
 2: 32 A (20 kW) for AC 22 A
 20 A (14 kW) for AC 23 A
 3: No of breaking contacts: 2
 4: 100 A (aM) with blade type cartridge fuses