

Viking™ 3 terminal blocks with screw connection

for copper cables



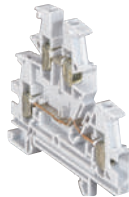
TN-C-S earthing schema
PEN separation
0 371 98 + 0 371 04 + 0 375 42



0 371 61 + 0 371 01 + 0 371 21
+ 0 371 31 + 0 371 77



0 371 69



0 371 68



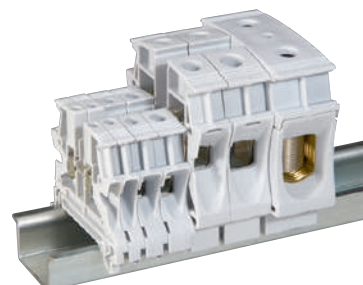
0 371 70 on rail



0 371 74



0 371 76



Same profile up to 10 mm pitch and same height from 12 to 22 mm pitch

Technical characteristics **p. 335** dimensions **see e-catalogue**
Approvals **p. 919**

Used to make the electrical connection between 2 flexible copper wires with or without ferrules or 2 rigid copper wires
2 areas for automatic insertion bridging combs up to 8 pitch (upper level only for multi-level blocks)
For rails depth 15 mm, EN 60715 depth 7.5 mm and 15 mm

| Pack | Cat.Nos | Connecting | | | | |
|------|-----------------------|---|--|-------------------------------|--|------------|
| | | Grey for standard circuit, blue for neutral conductor, orange for circuit not broken by the master isolating device, red for special circuits (safety, protected, etc), green for protection conductor class II equivalent assemblies | | | | |
| | | 1 connection - 1 entry/1 outlet | | | | |
| | | Colour | Nominal cross-section (mm ²) | Rigid wire (mm ²) | Capacity Flexible wire (mm ²) with or without ferrules | Pitch (mm) |
| 60 | 0 371 60 | Grey | 2.5 | 0.25 to 4 | 0.25 to 2.5 | 5 |
| 60 | 0 371 00 | Blue | | | | |
| 60 | 0 371 20 | Orange | | | | |
| 60 | 0 371 30 | Red | | | | |
| 50 | 0 371 61 | Grey | 4 | 0.25 to 6 | 0.25 to 4 | 6 |
| 50 | 0 371 01 | Blue | | | | |
| 50 | 0 371 21 | Orange | | | | |
| 50 | 0 371 31 | Red | | | | |
| 50 | 0 371 77 | Green | | | | |
| 40 | 0 371 62 | Grey | 6 | 0.5 to 10 | 0.25 to 6 | 8 |
| 40 | 0 371 02 | Blue | | | | |
| 40 | 0 371 78 | Green | | | | |
| 30 | 0 371 63 | Grey | 10 | 1.5 to 16 | 2.5 to 10 | 10 |
| 30 | 0 371 03 | Blue | | | | |
| 20 | 0 371 64 | Grey | 16 | 1.5 to 25 | 4 to 16 | 12 |
| 20 | 0 371 04 | Blue | | | | |
| 20 | 0 371 98 | Green | | | | |
| 20 | 0 371 65 | Grey | | | | |
| 20 | 0 371 05 | Blue | 35 | 2.5 to 50 | 4 to 35 | 15 |
| 20 | 0 371 99 | Green | | | | |
| 10 | 0 371 66 ¹ | Grey | 70 | 25 to 95 | 16 to 70 | 22 |
| | | 1 connection - 2 entries/2 outlets | | | | |
| 25 | 0 371 69 | Grey | 4 | 0.25 to 6 | 0.25 to 4 | 6 |
| 25 | 0 371 09 | Blue | | | | |
| | | 2 connections on 2 levels | | | | |
| 60 | 0 371 67 | Grey | 2.5 | 0.25 to 4 | 0.25 to 2.5 | 5 |
| 60 | 0 371 07 | Blue | | | | |
| 60 | 0 371 68 | Grey | 4 | 0.25 to 6 | 0.25 to 4 | 6 |
| 60 | 0 371 08 | Blue | | | | |
| | | 3 connections on 3 levels | | | | |
| 50 | 0 371 51 ² | Grey | 2.5 | 0.25 to 4 | 0.25 to 2.5 | 5 |

| Pack | Cat.Nos | For protection conductor | | | | |
|------|-----------------------|---|--|-------------------------------|--|------------|
| | | Metal base | | | | |
| | | 1 connection - 1 entry/1 outlet | | | | |
| | | Screwless fixing on rail up to 10 mm pitch and with screws for pitch 12 and 15 mm PEN from 10 mm ² | | | | |
| | | Colour | Nominal cross-section (mm ²) | Rigid wire (mm ²) | Capacity Flexible wire (mm ²) with or without ferrules | Pitch (mm) |
| 60 | 0 371 70 | Green/yellow | 2.5 | 0.25 to 4 | 0.25 to 2.5 | 5 |
| 50 | 0 371 71 | Green/yellow | 4 | 0.25 to 6 | 0.25 to 4 | 6 |
| 40 | 0 371 72 | Green/yellow | 6 | 0.5 to 10 | 0.25 to 6 | 8 |
| 30 | 0 371 73 | Green/yellow | 10 | 1.5 to 16 | 2.5 to 10 | 10 |
| 10 | 0 371 74 | Green/yellow | 16 | 1.5 to 25 | 4 to 16 | 12 |
| 10 | 0 371 75 | Green/yellow | 35 | 2.5 to 50 | 4 to 35 | 15 |
| | | 1 connection - bare block | | | | |
| 10 | 0 371 76 | - | 35 | 2.5 to 50 | 4 to 35 | 15 |
| | | 1 connection - 2 entries/2 outlets | | | | |
| | | Screwless fixing on rail | | | | |
| 50 | 0 371 79 | Green/yellow | 4 | 0.25 to 6 | 0.25 to 4 | 6 |
| | | PNE - Phase/Neutral/Earth | | | | |
| | | 3 connections on 3 levels | | | | |
| | | Metal base | | | | |
| | | Green/yellow marking for the lower level | | | | |
| | | Screwless fixing on rail | | | | |
| | | Colour | Nominal cross-section (mm ²) | Rigid wire (mm ²) | Capacity Flexible wire (mm ²) with or without ferrules | Pitch (mm) |
| 50 | 0 371 52 ² | Grey | 2.5 | 0.25 to 4 | 0.25 to 2.5 | 5 |

1: Built-in end cap
2: Rigid wire capacity: 2.5 mm² max. with equipotential bridging comb

Viking 3 power terminal blocks
p. 338

CAB 3 marking system
p. 342